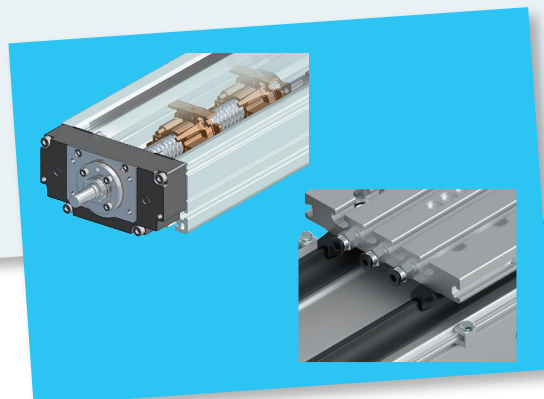
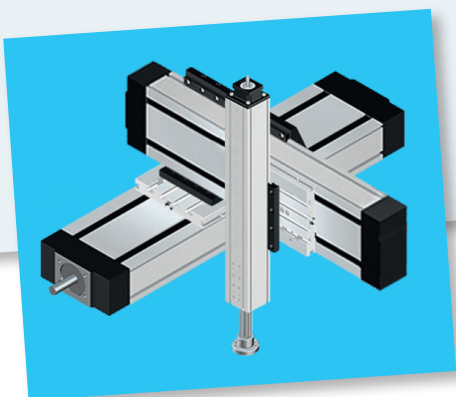
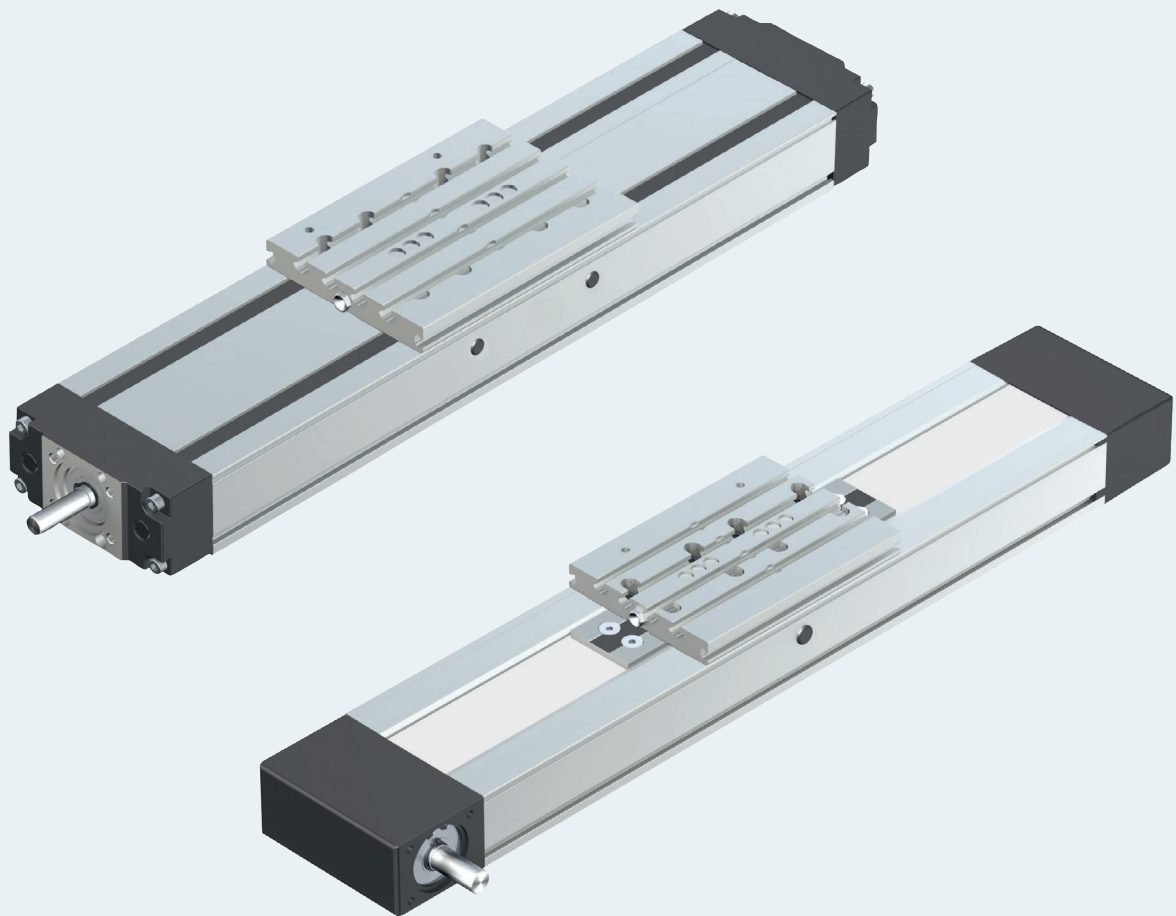


Compact Modules CKK / CKR



Identification system for short product names

Compact Modules are identified by the type designation and size.

Example		C	K	K	-	110	-	NN	-	1
System	=	Compact Module								
Guideway	=	Kugelschienenführung (Ball Rail System)								
Drive	=	Kugelgewindetrieb (Ball Screw Assembly) ZahnRiementrieb (Toothed belt drive)								
Size	=	070 / 090 / 080 / 110 / 145 / 200								
Version	=	N ormalausführung = Standard version)								
Generation	=	Product generation 1								

Changes/additions at a glance**Catalog set-up**

Catalog integration:

- ▶ "Lubrication / cover Resist": R999001349 (2017-03)
- ▶ New chapter "Project planning" contains:
Calculation principles, sample calculation
- ▶ New chapter "Abbreviations"

Technical modifications

- ▶ Integration MS2N motors
- ▶ MSK motors omitted